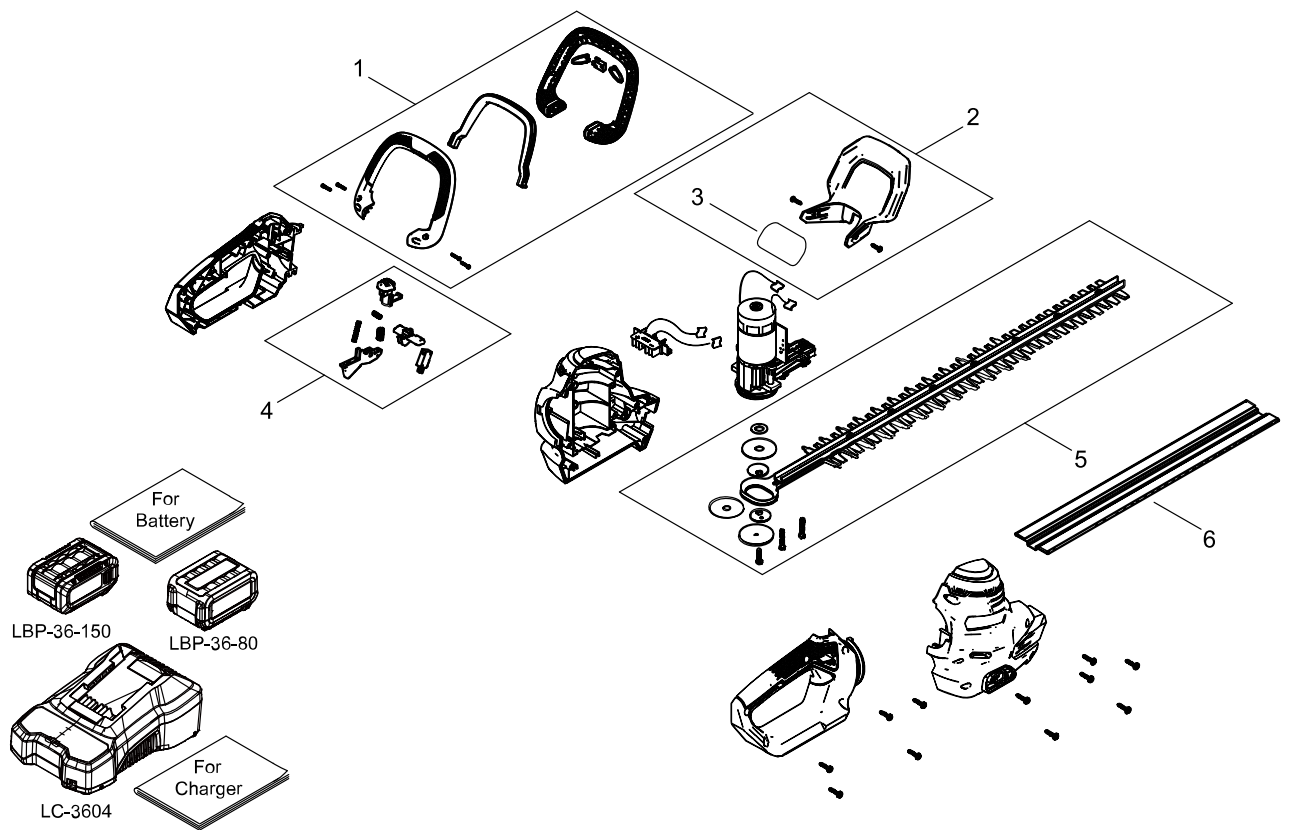


# HEDGE TRIMMER



\* Batteries and charger are handled as accessories instead of spare parts.  
Please place an order of batteries and charger at the same time as unit order.

## HEDGE TRIMMER

| Key No. | LV (+) | Parts Number | Parts Description | Qty | Standard | Class |
|---------|--------|--------------|-------------------|-----|----------|-------|
| 1       |        | P022-061080  | FRONT HANDLE ASY  | 1   |          | C     |
| 2       |        | P022-061720  | GUARD, HAND KIT   | 1   |          | C     |
| 3       | +      | P022-061760  | LABEL, CAUTION    | 1   |          | D     |
| 4       |        | P022-061730  | LEVER, SWITCH KIT | 1   |          | C     |
| 5       |        | P022-061740  | CUTTER, ASM       | 1   |          | B     |
| 6       |        | P022-061750  | SCABBARD, BLADE   | 1   |          | D     |

Class : Consumable class

A:Fast moving parts B:Semi-fast moving parts C:Slow moving parts D:Order only as needed